

# Dorney Park



**8<sup>th</sup> Grade Field Trip**

# Buses

Buses leave @ 8:10 (after homeroom).



Buses return @ 7:00 PM (at the middle/intermediate school).

Buses 1, 2: Drop off @ Middle School Canopy

Buses 3,4,5: Drop off @ Front North Intermediate

# Buses

*It is extremely important that you tell your ride where to pick you up so they are waiting in the correct location!!!*



Buses 1, 2: Drop off @ Middle School Canopy  
Buses 3,4,5: Drop off @ Front North Intermediate  
Parents for students on buses 1,2 park Middle School side. Buses 3,4,5 park North Intermediate

## Cashless

Dorney Park & Wildwater Kingdom is now cashless. Our in-park locations only accept VISA, Mastercard, Discover and American Express credit cards and most debit cards are accepted for payment. We also accept Apple Pay and Google Pay. Personal Checks are not accepted at any location in the park.

No card? No problem! We have [Cash-to-Card kiosks](#) that can transfer cash to a card, without fees, which can be used anywhere, not just at the park.

Cashless Kiosks can be found at the following locations:

Dorney Park locations: Main Entrance, Games Area near Fun Zone Arcade, Center Stage Fries

Wildwater Kingdom locations: Locker Rental area

No food or beverages are allowed to be taken into the park.

Exception: 1 factory sealed bottle of water per person

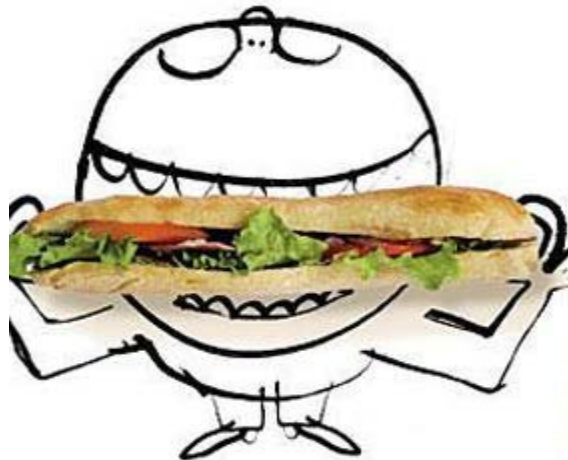
Once you exit the bus on arrival you won't be back to bus until 4:45 pm

**KEEP BUS CLEAN!**

**Snacks, sandwiches, and drinks are for the bus ride ONLY!!!!**

**You may not take any food or drinks into the park, except for your 1 factory sealed bottle of water per person.**

**All other food and drink must stay on the bus!**

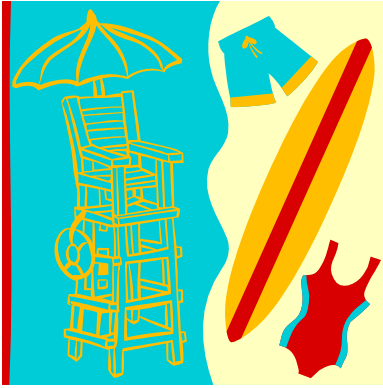




We  
**DO NOT**  
stop  
for  
bathroom  
breaks...

**BE  
SMART!**





# Dress Code

Our school dress code is enforced!!!

**A MUST: Your Wallenpaupack Class Of 2029 t-shirt!!!**

**Allowed:** sleeveless tops, spaghetti straps, school length shorts.

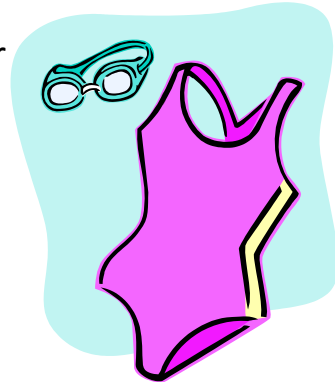
**Not allowed:** low-cut shirts, belly shirts.

You must be wearing shoes and shirts to enter and leave Dorney Park.

Shoes, shirts and shorts must be worn at all times on park property except while in Wildwater Kingdom Water Park.

Proper swimming attire is required: one or two-piece suits or shorts without abrasive buttons , rivets, zippers, snaps or studs.

Thong suits or any swimwear that does not **sufficiently** cover are prohibited.



# PDA<sub>s</sub>




**NOT ALLOWED!!!**

**DON'T DO IT!!!**

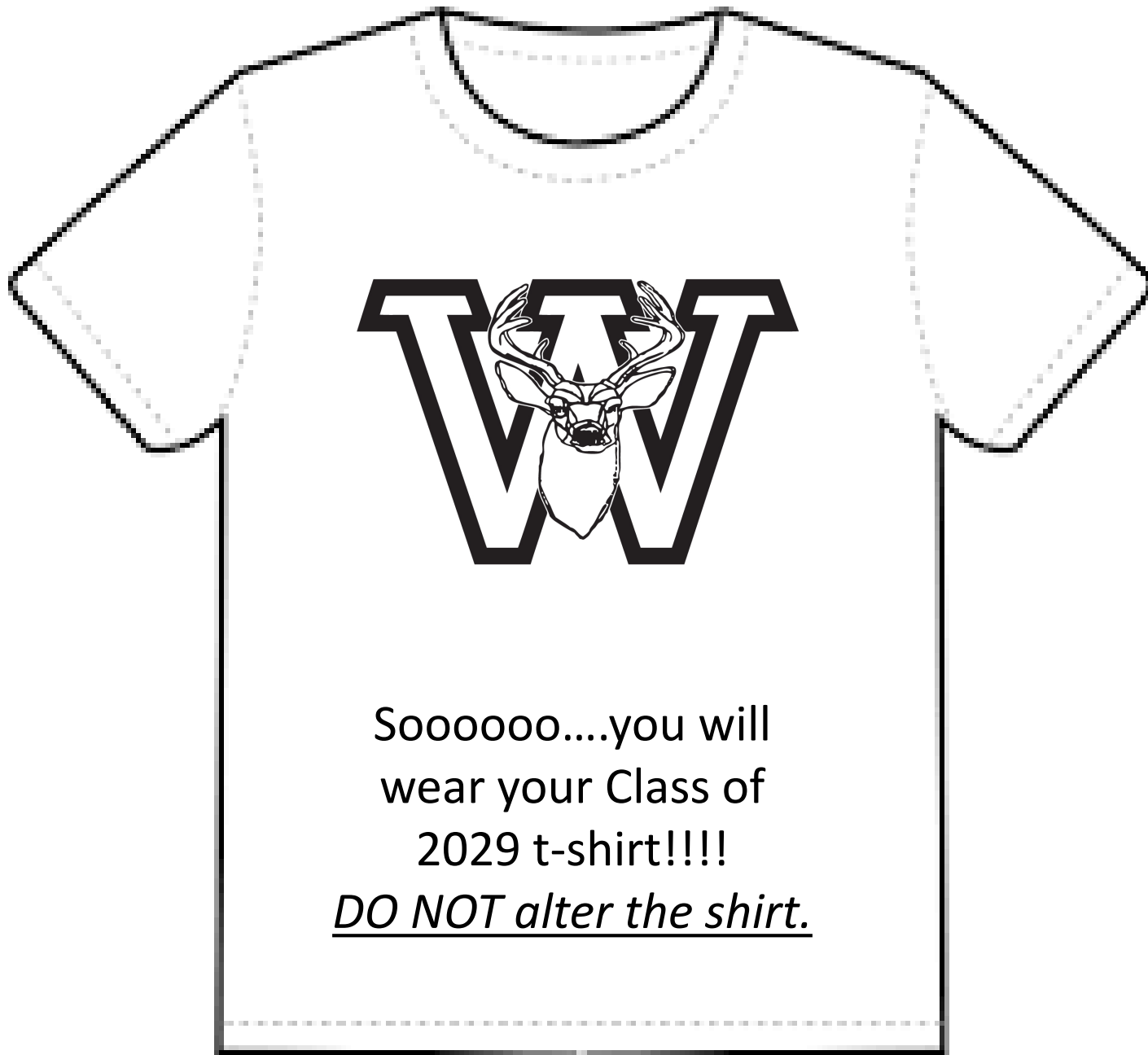
**SAME RULES AS  
SCHOOL!!!**





No clothing with  
profanity, illegal  
substances, and other  
suggestive or offensive  
material!!!!

**Again: You will be  
wearing your Class of  
2029 t-shirt when  
outside of the Water  
Park!**



# Additional Items

## Sunscreen



## Money



**Recommended: at  
least \$25.00!!!**

# Bag Search

Dorney Park checks your bag as you walk through the ticket line.



No food or drink except 1 bottle of water is allowed to be brought into the park and anything extra will be confiscated by park officials.

# Lockers

## All-Day Lockers

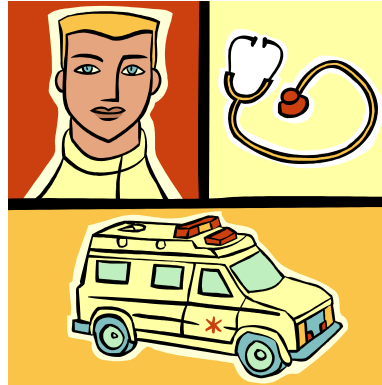
Unlimited locker access all day. No fee to re-lock.

- Small - \$20.00
- Large - \$25.00
- Jumbo - \$35.00

(Price includes a \$4.00 deposit refundable upon return of locker key.)

**Lockers are now automated! They use an electronic pin code which allows unlimited access.**

# First-Aid – 2 Stations



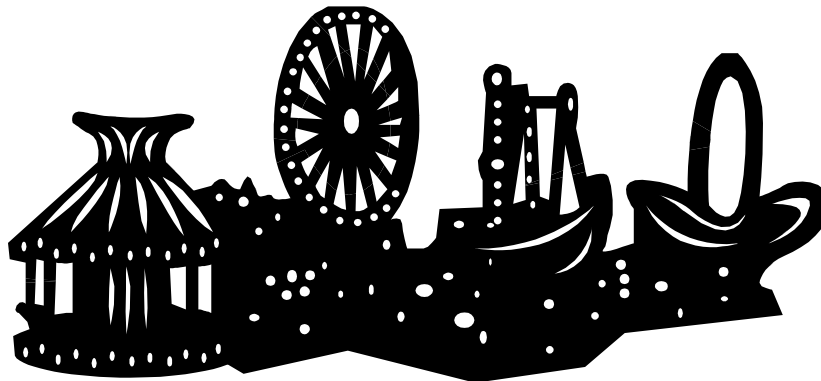
Carousel Gift & Souvenir Shop  
(near Park Entrance)  
&  
Wildwater Kingdom Water Park  
(by Speed Slides)

# Line Jumping

Line jumping is NOT allowed.

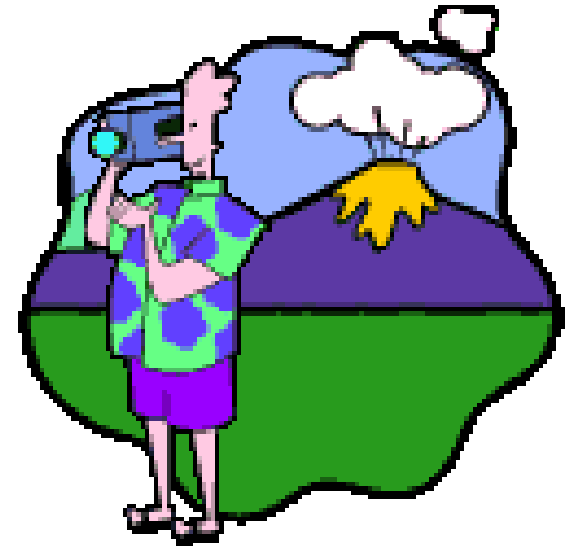
Dorney Park & Wildwater Kingdom defines line jumping as:

- 1.) Cutting in front of a guest already waiting in line.
- 2.) Leaving a line for any reason, then attempting to reenter at the same point.





The use of **camera phones**,  
**video recorders**  
and  
**still photography** is  
*prohibited*  
on all rides  
and  
inside any restroom  
facility  
at  
Dorney Park  
and  
Wildwater Kingdom.





# Check-In



You need to  
check-in  
with the  
teachers  
from your  
bus  
**@ 1:00 PM**  
at  
the Carousel.



You need to  
meet back  
At the Carousel  
at 4:45 PM  
(with all your belongings and  
locker checked)  
to  
board the buses  
and  
**depart by 5:00 PM.**

# **Dorney Park** **& Wildwater Kingdom**

**Most of your questions can also  
be answered by navigating their  
website:**

**[www.dorneypark.com](http://www.dorneypark.com)**



# Code of Conduct



Remember that you are  
representing  
**Wallenpaupack Area  
Middle School.**



“You must behave in a manner that will not cause or contribute to safety risks, have a negative impact on another guest’s family-fun experience, or disrupt the peace and tranquility of the Park. Failure to comply may be cause for dismissal from the Park!”

**Respect the buses, the Park, each other, and  
yourselves!**

