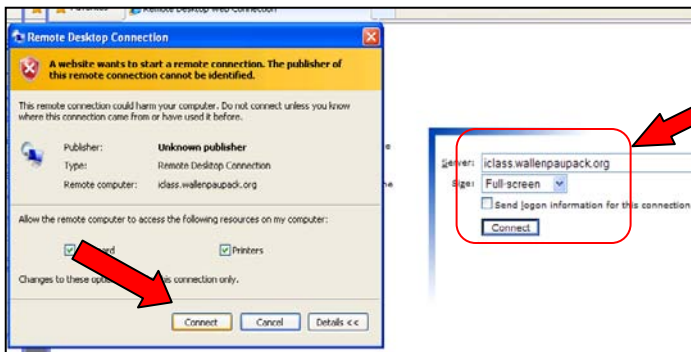
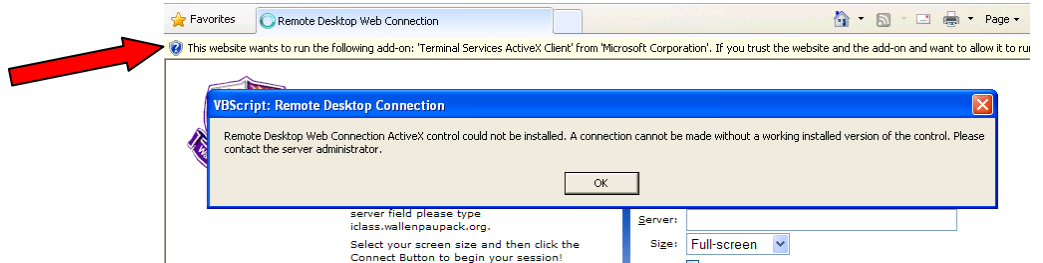


Using Remote Access – iClass Virtual Access and Netstorage

There are two methods of remotely connecting to your school files using the Internet Classroom – iClass.

Go to: <http://iclass.wallenaupack.org>

You may see at the top of the window a message which indicates you must allow an “Active X” client to run. Click on the message and allow the “Active X” add-on to run.



In the server field enter: *iclass.wallenaupack.org*
Size: Full screen
Click on “Connect”

A Remote Desktop Connection window will open – again click on “Connect”

Once you click on “Connect” the Login screen will appear.

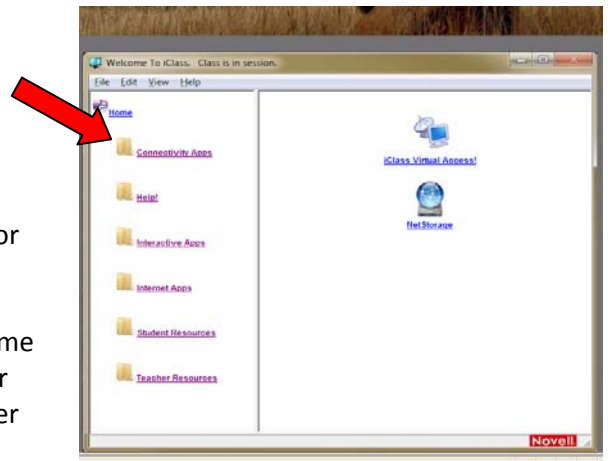
Enter your username and password you use in school. It will take a few moments to establish a remote connection with the WASD servers.

Click on “Connectivity Apps”

The iClass window will now open and you can select either “NetStorage” or “iClass Virtual Network”

Netstorage – use to access your files stored in your home drive or files which your teacher has stored on the shared drive.

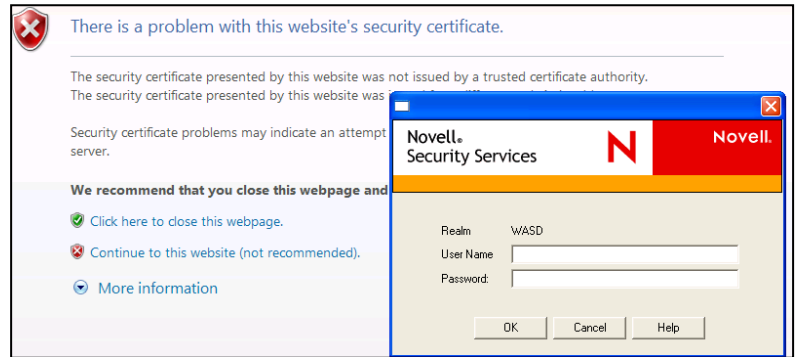
iClass Virtual Access – use to access your files stored on your home drive, files which your teacher has stored on the shared drive for your use AND use the applications that are found on the launcher such as Microsoft Word, PowerPoint or Excel.



Using Netstorage

Important: To use your files from school through the NetStorage connectivity, you must have the SAME application installed on your home computer. You may access NetStorage via <http://iclass.wallempaupack.org> or <http://netstorage.wallempaupack.org>

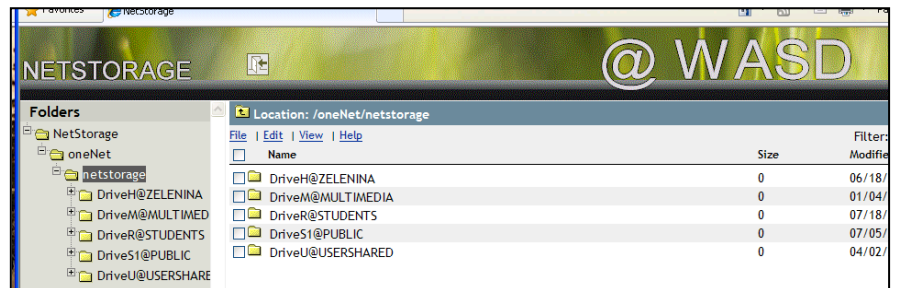
To access your files through NetStorage –
Click on Netstorage, you *may* see a certificate message.
Continue to the website and enter your
UserName and Password.



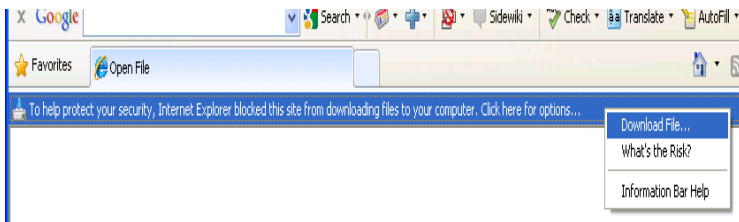
Once logged into Netstorage, you will see a list of your drives on the left. Double-click to open and navigate through your folders and files.

Students will see their home drive (H:) and the shared drive (U:)

Teachers will see their home drive, multimedia, students, public and shared drive.



When opening a file, a message will appear asking if you wish to “download” the file.



Click on the message – then click on “Download File...”

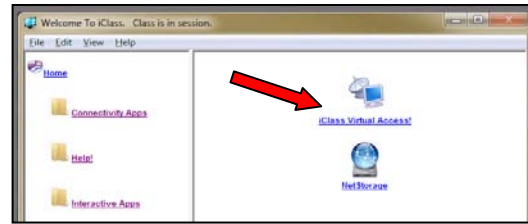
Continue through the next screens to “Open” and “Proceed” – your file will open.

When saving your changes - You must select **“SAVE AS”** and direct the programs back to your home drive.

Using iClass Virtual Access

Select iClass as the remote connection if the application is not stored on your home computer. Example, your presentation was started in school in PowerPoint 2007, but you do not have the same application or version on your home computer.

After logging into iClass, select iClass Virtual Access



The same application launcher is now available to you remotely. Be patient, it takes a few moments to establish this connection.

From this point you may open the applications on the launcher. Due to licensing restrictions, not every application can be accessed remotely.

From within the application, you may open existing files stored on district servers and save your work back to your home drive.

Be sure to logout and close the browser windows when leaving the iClass system.